

Hills Shop

The "science"-themed good and souvenir shop. You can find robot kits, space food, rare minerals, and more.



Japanese Space food: "The Space Curry"

Ristorante Jin

TEL +81-761-24-0761

The café-restaurant on the 2F, "Ristorante Jin" serves cuisines using local food products through all 4 seasons. You can also enjoy a stunning view of the beautiful and spiritual Mount Hakusan.



[Lunch] 11:00~14:00
[Cafe] 14:00~17:00
[Dinner] 18:00~22:00 (LO 21:00)

Evening Performance

(The Wind Illumination)

LED light spreading across the entire site of the roof is blinked by sensing the movement of the wind and colors up the night sky.



Scientific "Tricks"

There are many "tricks" hidden in and out of the museum. Try to discover the tricks and fully enjoy the entire facilities.

Science Hills Komatsu is

As a town of "Science and Interaction", and

As a stage that nurtures the creativity of the future.

On this hill, there are plenty of fun, surprises,

and charm in science.

Let our curiosities expand to the fullest

and let's fully enjoy the beauty of science.

The area that spreads across this hill is a place where

everyone grows.



Visitor's Guide

[Opening Hours] 9:30am-6:00pm (Tickets available until 5:30pm)
Evening hours are extended to 10pm during the evening exhibits.

[Dates Closed]

Monday (However, the day following a national holiday will be closed. The facility is open during summer break and golden week holidays.)

New Year's Holidays (December 29 to January 3)

[Entrance Fee]

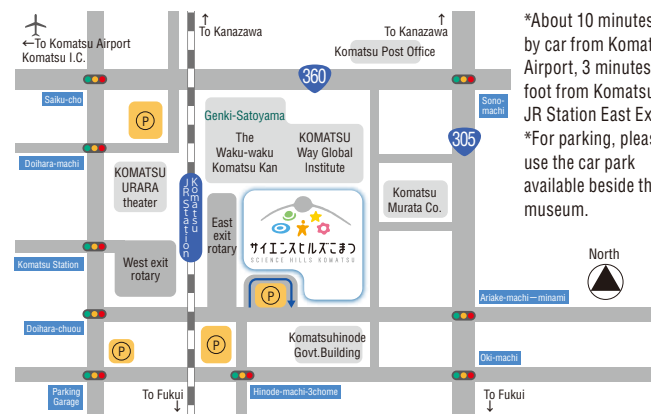
Category/Classification	Classification/section	Individuals	Groups
3D Studio (Fees per entrance)	Adults	600 yen	480 yen
	High School Students	400 yen	320 yen
	Children (older than 3 years), Elementary and Junior High School Students	200 yen	160 yen
Wonderland	Adults	500 yen	400 yen
	High School Students	300 yen	240 yen
	Children (older than 3 years), Elementary and Junior High School Students	200 yen	160 yen
Set Ticket (3D Studio and Wonderland)	Adults	800 yen	
	High School Students	500 yen	
	Children (older than 3 years), Elementary and Junior High School Students	300 yen	
Annual Passport	Adults	4,000 yen	
	High School Students	2,500 yen	
	Children (older than 3 years), Elementary and Junior High School Students	1,500 yen	

*1) With annual passport, you can see one program in 3D studio a day and wonderland.

*2) Disability discount is available.

*3) Discounts are applied for the kindergartens, elementary and junior high schools in Komatsu city for educational purposes. (Number of application is limited. Please contact us for detailed information.)

Access Map

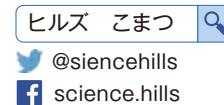


*About 10 minutes by car from Komatsu Airport, 3 minutes on foot from Komatsu JR Station East Exit
*For parking, please use the car park available beside the museum.

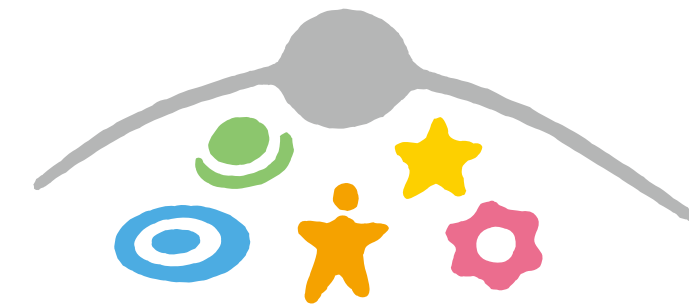


Creative Science Museum

Komatsu-no-mori 2, Komatsu City,
Ishikawa, 923-8610
TEL +81-761-22-8610 FAX +81-761-23-8686
E-mail: kagaku@city.komatsu.lg.jp
http://science-hills-komatsu.jp



2014.05.28



サイエンスヒルズこまつ
SCIENCE HILLS KOMATSU

未来を創る。

ひとつづくり、ものづくり。

Creative Science Museum
Komatsu City, Ishikawa

ようこそ。科学を遊ぶ丘へ。



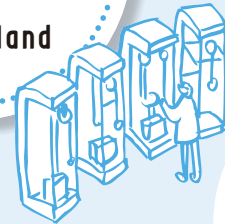
Wonderland

"This manufacturing pavillion is a interactive zone in which one can understand how the fundamental principles of science are being applied in manufacturing sites. It creates/develops curiosity of the children such as ""Why?"" , ""how come?"""



Wonder
turn to
Impression

Wonderland



Finding
hidden
fundamentals
Miracle Lab

Miracle Lab

This is a zone to experience scientific experiences based on the themes of advanced scientific technology, natural sciences, and environmental sciences. By observing and experiencing the mysterious phenomenons around us through various experiments, you can find the hidden fundamental principles of science.



Scanning Election Microscope

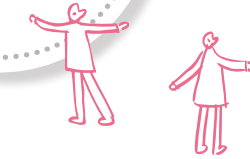
Waku-Waku Hall

Not only does it host events related to science and manufacturing, this event hall is the center of information exchange for business and learning. This is where new curiosities are born and spread.



Expanding
curiosity

Waku-Waku Hall



P

100yen per one hour,
surcharge: 50yen per 30minutes

passage for pick up/drop

3D Studio

"3D Studio", one of the biggest dome-type theaters in Japan, provides fascinating planetarium programs and scientific programs of a three-dimensional, 4K digital images which have superior resolution and brightness. Its overwhelming images will activate your curiosity and nourish your dreams.



Nourishing
your dreams
3D Studio

Future Lab

A zone to enjoy setting up robots and science handicrafts based on the themes of industry, life, and the natural environment. Experiencing the excitement of macufacturing/invention at your finger tips, you can shape the technological future at your own will.



Robot for programing workshop

Becoming
familiar with
the future
Future Lab



Star Terrace

Petit Gallery

EV

Café Restaurant

2F

1F

Sephyrean Hill

Komatsu Business Plaza

Évoluer Plaza

Wise Room 1

Waku-Waku Hall

C

B

A

Sunshine Lobby

3D Studio

IN

OUT

UP

EV

EV BUS

Rapid charger

Rainbow Oasis

Hills Shop

Information

porch

bus stop for EV bus

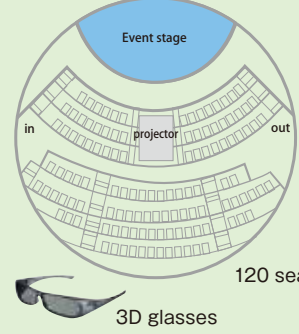
Omotenashi Gate

From Komatsu Station East Exit

From Waku-Waku-Komatsu kan

From Genki-Satoyama

- Paid zone
- Free zone
- Drinks corner
- Coin lockers
- Restrooms
- Multipurpose restrooms
- Nursing room
- Bicycle parking area
- Smoking area



120 seats

3D glasses

Information about the programs is shown in our web page.