

Hills Shop (Museum Shop)

There are goods and souvenirs that are related to science and the universe in Hills Shop. You can find robot kits, experimental tool kits, space food, rare minerals, and more.



"The Space Bread"

Ristorante Jin (Italian Restaurant)

TEL +81-761-24-0761

The café-restaurant "Ristorante Jin" is located on the second floor of the science museum. It serves seasonal cuisine using local food. You can also enjoy the beautiful views of Mt. Hakusan.



[Lunch time] 11:00~14:00
[Cafe time] 14:00~17:00
[Dinner time] 18:00~22:00 (LO 21:00)

Illumination of the wind

LED lights studded to site blink on and off depending on the direction and strength of the wind. You can feel nature breathing.



Scientific "Tricks"

There are many hidden surprises through which you can learn scientific principles and laws in many places inside and outside the museum. Try to discover the tricks and fully enjoy the entire facility.

Science Hills Komatsu is a facility of exchange between science and business.

It is also a place filled with surprise, enjoyment and fascination of science.

where you can develop your creativity for the future.

Now please expand your mind, let your curiosity roam free, and enjoy the experiments and learning about the principles and theory to your heart content.

Here you can enrich your life through practical experience.

The area that spreads across this hill is a place where everyone grows.



Creative Science Museum
Honorary Director Reiji Matsumoto



Visitor's Guide

[Opening Hours] 9:30am-6:00pm (Last admission 5:00pm)

Last admission to 3D studio: before starting the last program)

Evening hours are extended to 10pm during the evening exhibits.

[Days Closed]

Monday (If Monday is national holiday, we will be closed on Tuesday instead.

The facility is open during summer break and golden week holidays)

New Year's Holidays (December 29 to January 3) Open from January 2, 2016

[Admission Fee]

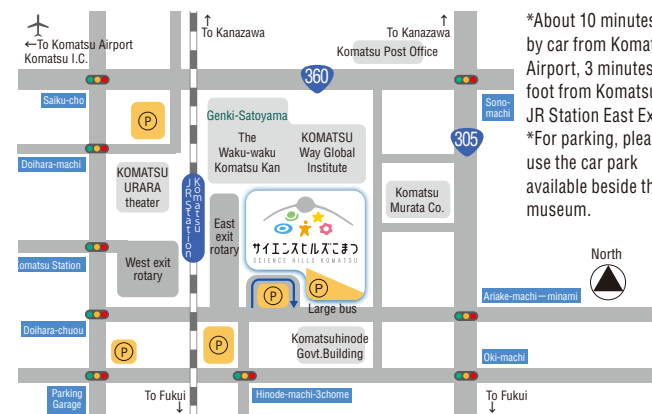
Category/Classification	Classification/section	Individuals	Groups
3D Studio (Fees per entrance)	Adults	600 yen	480 yen
	High School Students	400 yen	320 yen
	Children (older than 3 years), Elementary and Junior High School Students	200 yen	160 yen
Wonderland	Adults	500 yen	400 yen
	High School Students	300 yen	240 yen
	Children (older than 3 years), Elementary and Junior High School Students	200 yen	160 yen
Set Ticket (3D Studio and Wonderland)	Adults	800 yen	
	High School Students	500 yen	
	Children (older than 3 years), Elementary and Junior High School Students	300 yen	
Hills Passport (annual)	Adults	4,000 yen	
	High School Students	2,500 yen	
	Children (older than 3 years), Elementary and Junior High School Students	1,500 yen	

*1) With hills passport, you can see one program in 3D studio a day and wonderland.

*2) Disability discount is available.

*3) Discounts are applied for the kindergartens, elementary and junior high schools in Komatsu city for educational purposes. (Number of application is limited. Please contact us for detailed information.)

Access Map



*About 10 minutes
by car from Komatsu
Airport, 3 minutes on
foot from Komatsu
JR Station East Exit
*For parking, please
use the car park
available beside the
museum.



Creative Science Museum

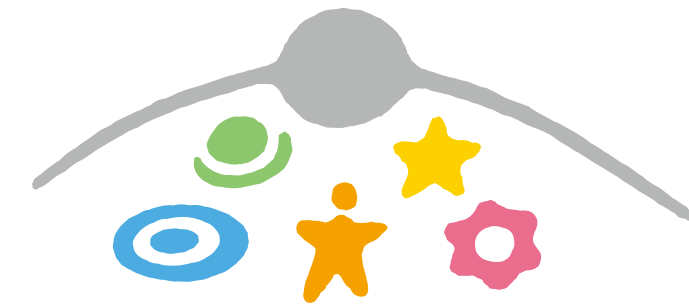
Komatsu-no-mori 2, Komatsu City,
Ishikawa, 923-8610
TEL +81-761-22-8610 FAX +81-761-23-8686
E-mail: kagaku@city.komatsu.lg.jp
http://science-hills-komatsu.jp

ヒルズ こまつ

@sciencehills

science.hills

2015.11



サイエンスヒルズこまつ
SCIENCE HILLS KOMATSU

未来を創る。
ひとつくり、ものづくり。

Creative Science Museum
Komatsu City, Ishikawa

ようこそ。科学を遊ぶ丘へ。



This manufacturing pavilion is an interactive zone in which one can understand how the fundamental principles of science are being applied in manufacturing sites. It develops the curiosity of the children by encouraging them to ask "Why?" and "How?"
New exhibition from July 2015: Space Station Komatsu!



**Where
curiosity turns
into excitement**

Wonderland

**New
discoveries
change
the future**

Miracle Lab

Learn the scientific way of thinking through experiment or observation of the strange phenomena all around us. We nurture the researchers of the future.



Scanning Electron Microscope

Walk From Komatsu

Not only does it host events related to science and manufacturing, this event hall is the center of information exchange for business and learning. This is where new curiosities are born and spread.



Event: Robot Demonstration

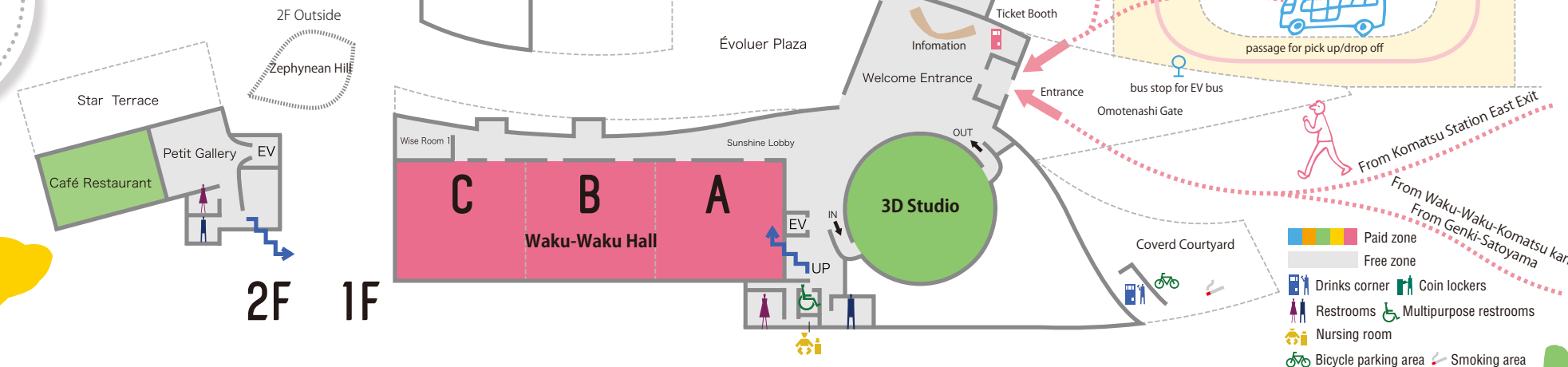
Expanding
curiosity
Waku-Waku Ha!

Learn about science and technology through a variety of manufacturing techniques, such as woodworking and electronic work. We nurture the engineers of the future.



High popularity: Lego robot programming

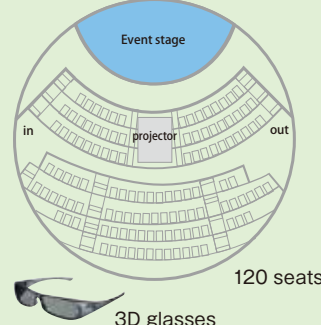
**The future
is now**
Future Lab



**Nourishing
your dreams**

3D Studio

“3D Studio” is one of the largest dome-type theaters in Japan and equipped with a 4K projector which can show scientific programs with beautiful and bright images. Experiencing overwhelming ambience in the three-dimensional will activate your curiosity and nourish your dreams.



Information about the programs is shown in our web page.